

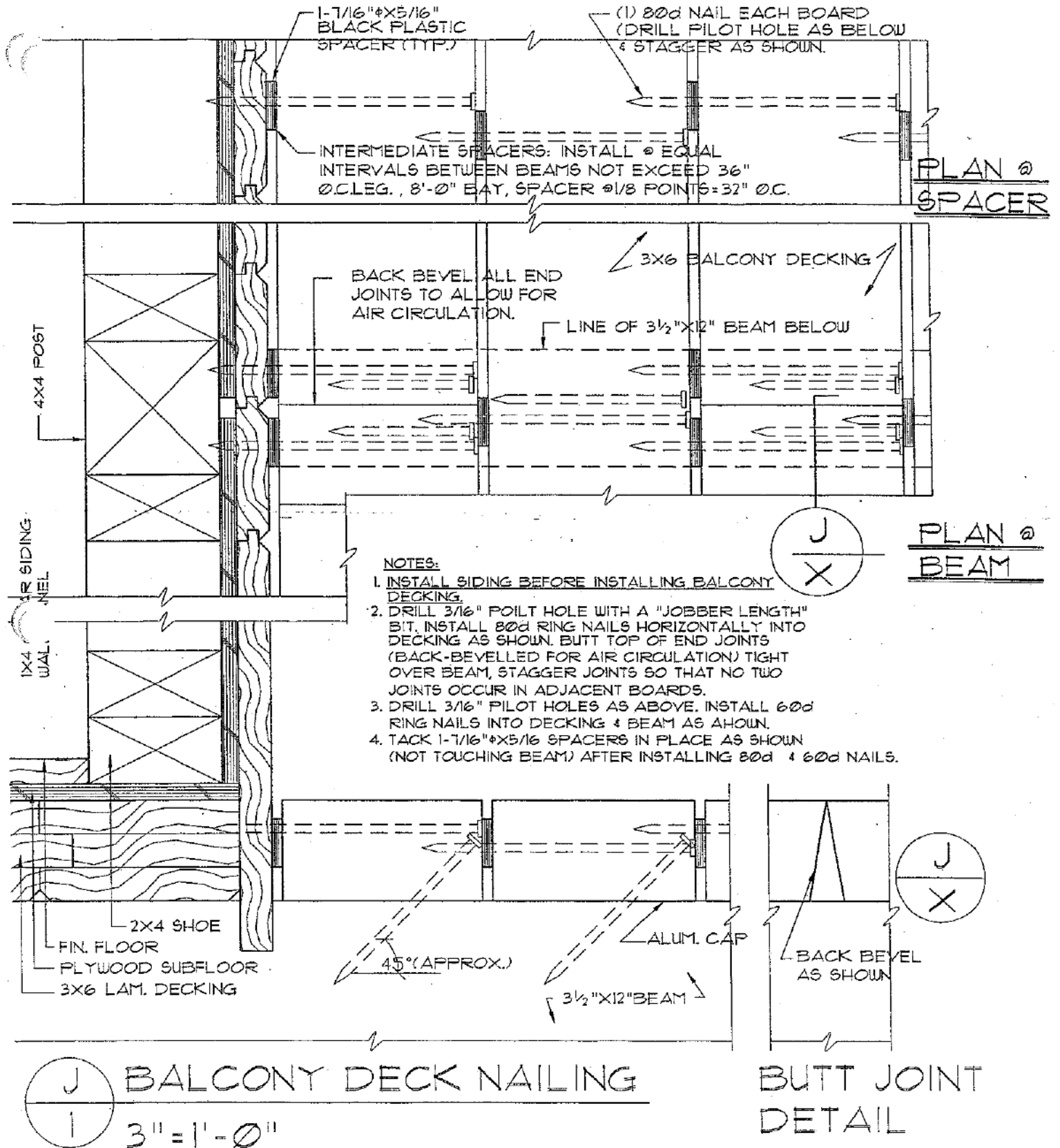
# Acorn Deck House Company

Keep in mind that some of the "old" details may not apply to your deck.

AcornDeckHouse.com

852 Main Street Acton, MA 01720

800.727.3325 Fax: 978.263.6850



# Acorn Deck House Company

Keep in mind that some of the "old" details may not apply to your deck.

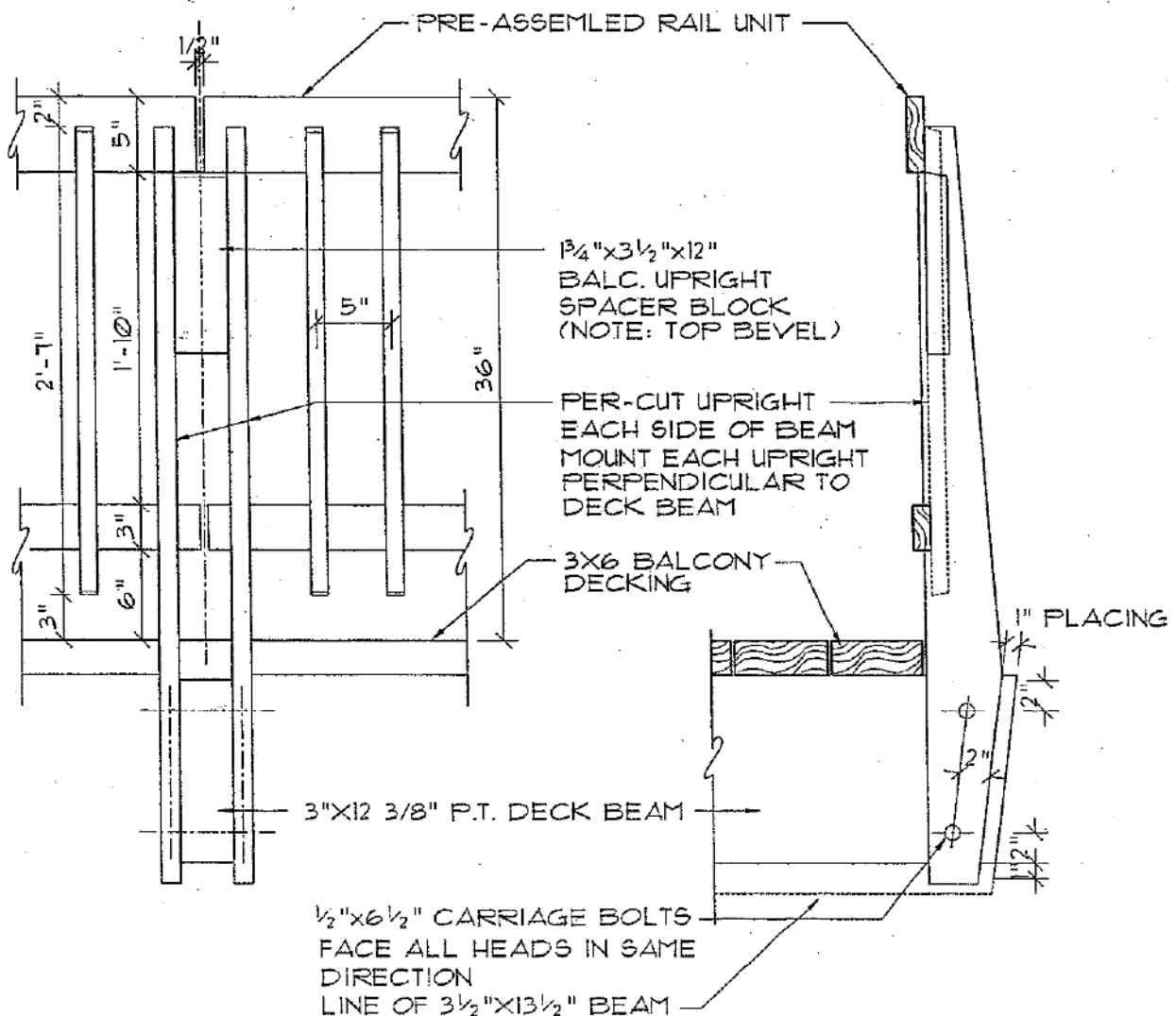
AcornDeckHouse.com

852 Main Street Acton, MA 01720

800.727.3325 Fax: 978.263.6850

## NOTES:

- FASTEN UPRIGHTS TO BEAM W/(2)  $\frac{1}{2}$ "X $6\frac{1}{2}$ " CARRIAGE BOLTS.
- FASTEN SPACER TO UPRIGHTS W/(2)  $2\frac{1}{2}$ " SCREWS EACH SIDE (AS SHOWN)
- TRIM END(S) OF RAIL UNIT EXTENDING BEYOND LAST BALUSTER TO FIT UPRIGHT SPACING WITH  $\frac{1}{2}$ " BETWEEN RAILS OVER CENTERLINE OF BEAM AND/OR SPACER BLOCK. WHERE RAIL IS TO BE MOUNTED BETWEEN UPRIGHTS, TRIM ENDS SYMMETRICALLY.
- FASTEN RAIL UNIT TO UPRIGHTS W/(2)  $2\frac{1}{2}$ "#12 SCREWS EACH RAIL.
- FASTEN UPRIGHTS TO BEAM W/(2)  $\frac{1}{2}$ "X8" CARRIAGE BOLTS WHEN 5" WIDE BEAM IS SPECIFIED.



J  
2

BALCONY RAILS & UPRIGHTS:

36" HT.

# Acorn Deck House Company

Keep in mind that some of the "old" details may not apply to your deck.

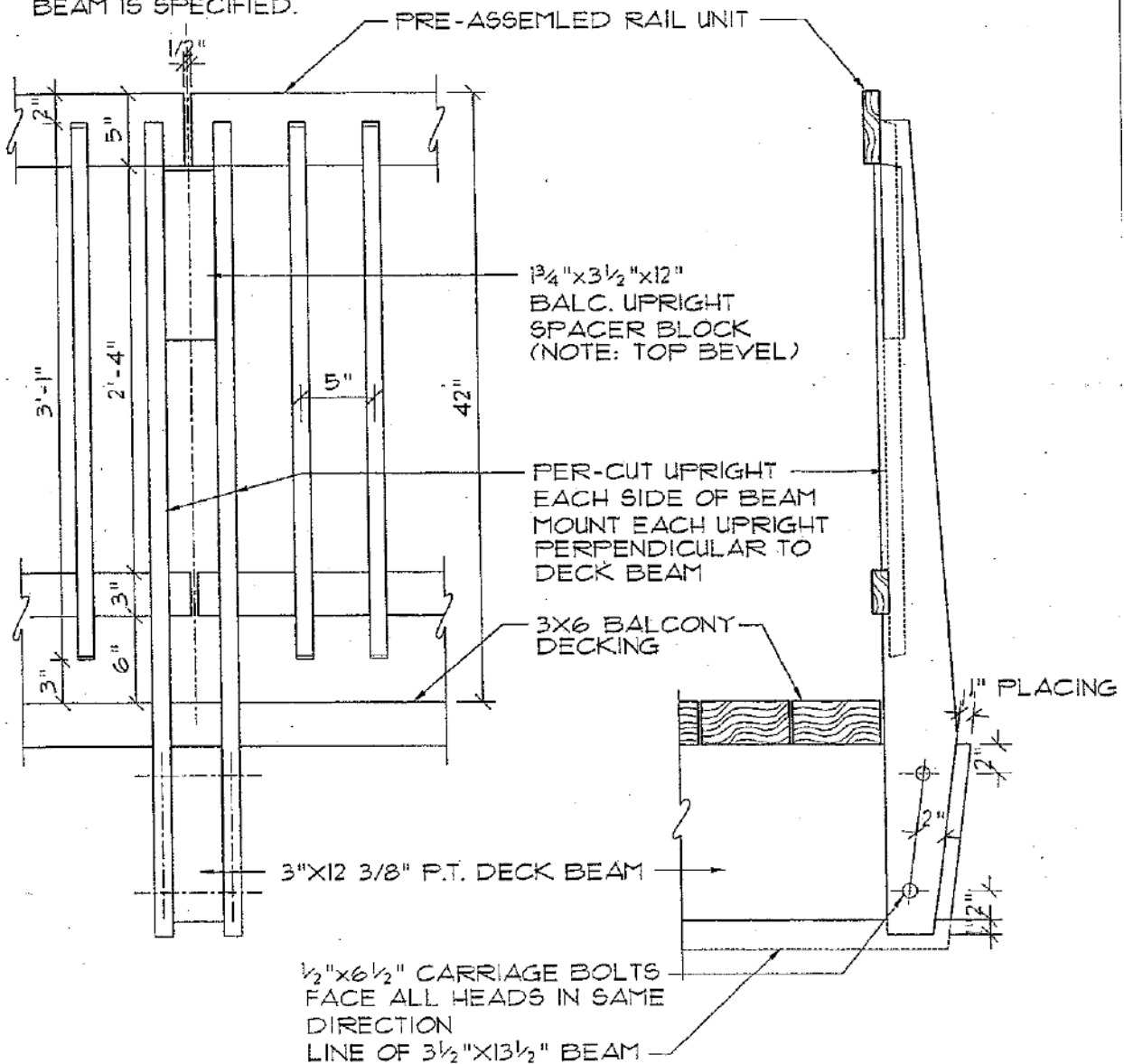
AcornDeckHouse.com

852 Main Street Acton, MA 01720

800.727.3325 Fax: 978.263.6850

## NOTES:

- FASTEN UPRIGHTS TO BEAM W/(2)  $\frac{1}{2}$ "X $6\frac{1}{2}$ " CARRIAGE BOLTS.
- FASTEN SPACER TO UPRIGHTS W/(2)  $2\frac{1}{2}$ " SCREWS EACH SIDE (AS SHOWN)
- TRIM END(S) OF RAIL UNIT EXTENDING BEYOND LAST BALUSTER TO FIT UPRIGHT SPACING WITH  $\frac{1}{2}$ " BETWEEN RAILS OVER CENTERLINE OF BEAM AND/OR SPACER BLOCK. WHERE RAIL IS TO BE MOUNTED BETWEEN TO UPRIGHTS, TRIM ENDS SYMMETRICALLY.
- FASTEN RAIL UNIT TO UPRIGHTS W/(2)  $2\frac{1}{2}$ "#12 SCREWS EACH RAIL.
- FASTEN UPRIGHTS TO BEAM W/(2)  $\frac{1}{2}$ "X $8$ " CARRIAGE BOLTS WHEN 5" WIDE BEAM IS SPECIFIED.



J  
2A

BALCONY 42" RAILS & UPRIGHTS

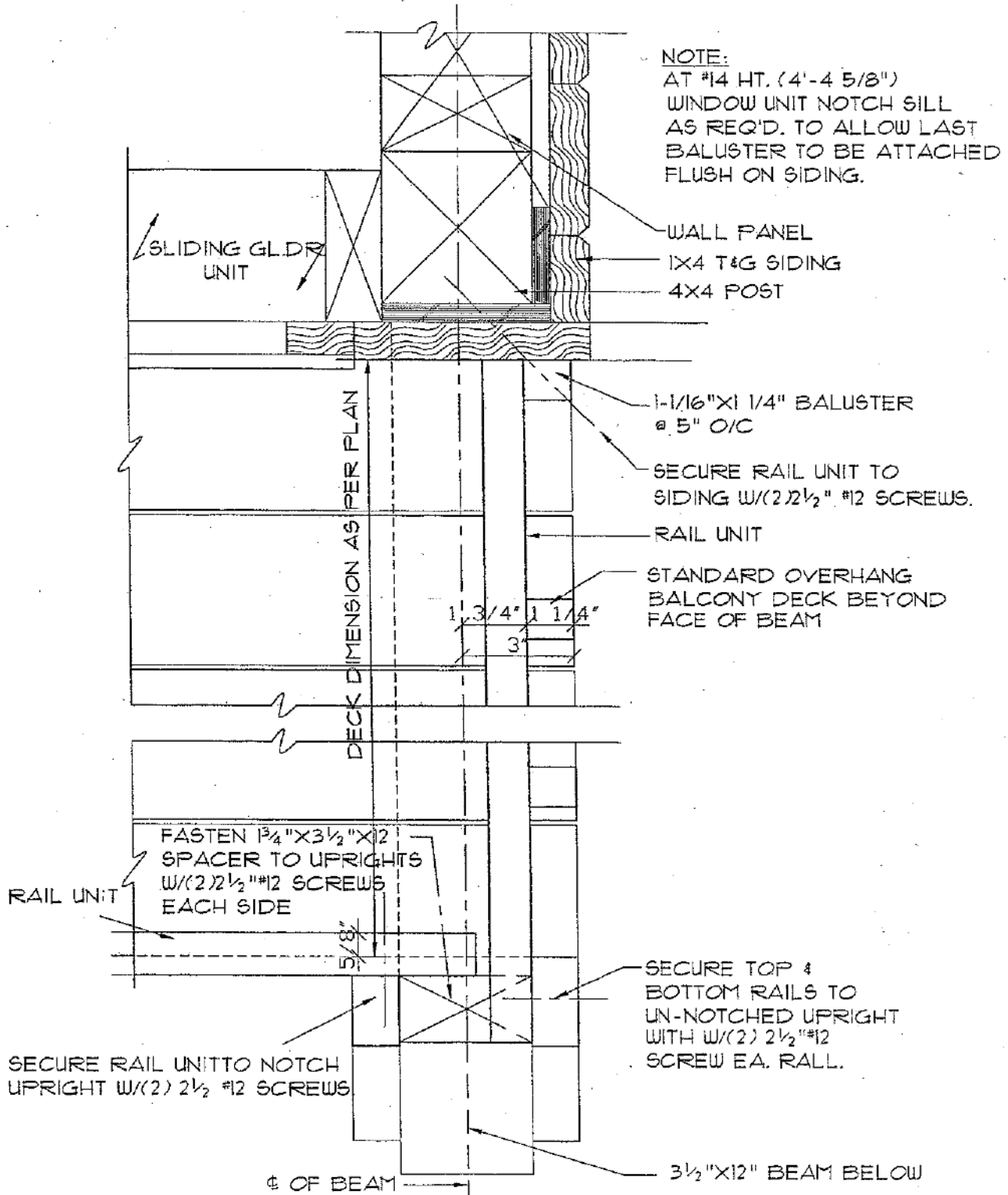
# Acorn Deck House Company

Keep in mind that some of the "old" details may not apply to your deck.

AcornDeckHouse.com

852 Main Street Acton, MA 01720

800.727.3325 Fax: 978.263.6850



J  
3

## BALCONY DECK RAIL CONNECTION

@ "OUTSIDE" CORNER & @ SIDING

# Acorn Deck House Company

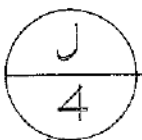
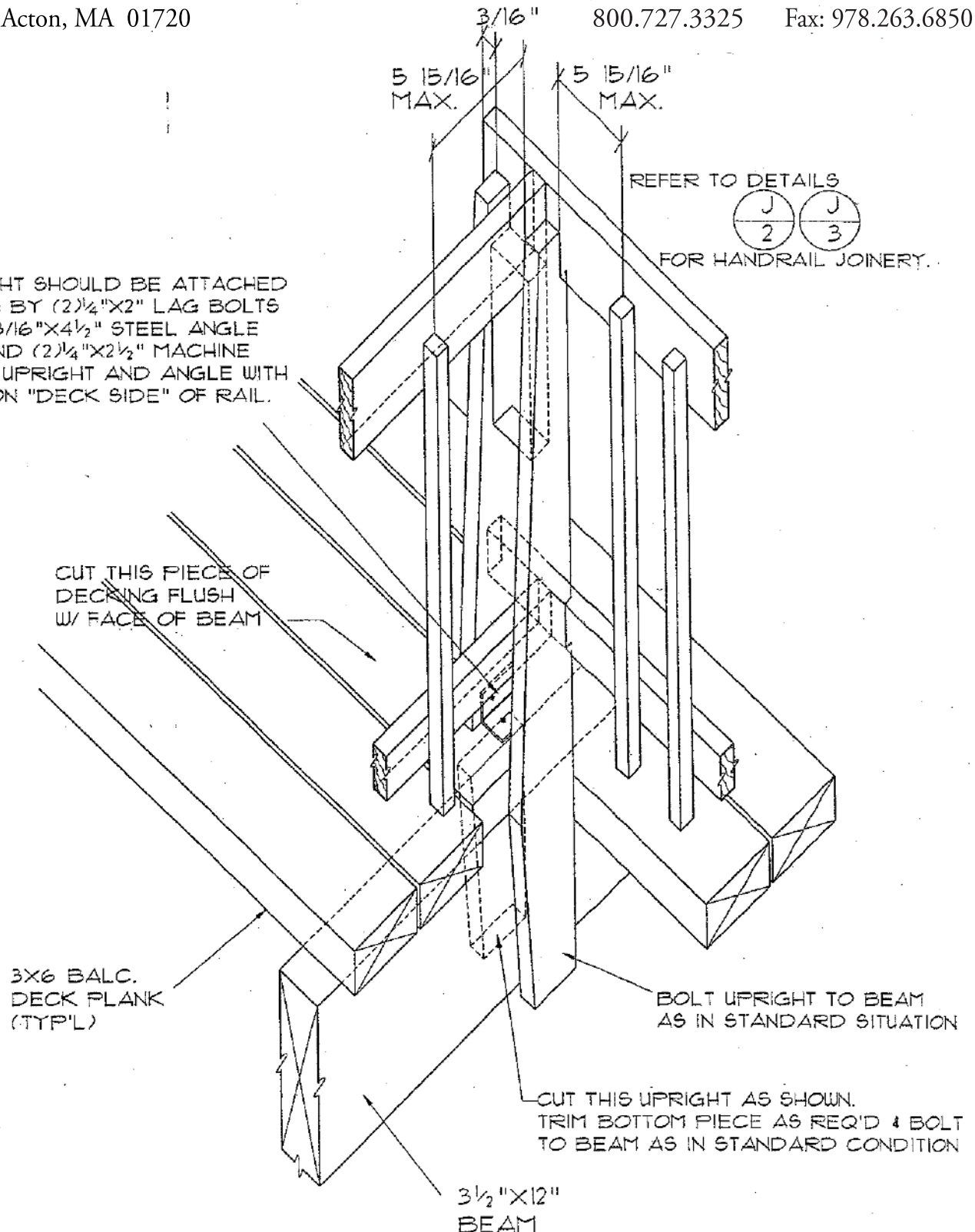
Keep in mind that some of the "old" details may not apply to your deck.

AcornDeckHouse.com

852 Main Street Acton, MA 01720

800.727.3325 Fax: 978.263.6850

FIELD-CUT UPRIGHT SHOULD BE ATTACHED TO 3X6 DECKING BY (2) ½"X2" LAG BOLTS THROUGH 2"X2"X3/16"X4½" STEEL ANGLE INTO DECKING AND (2) ½"X2½" MACHINE BOLTS THROUGH UPRIGHT AND ANGLE WITH HEAD OF BOLT ON "DECK SIDE" OF RAIL.



BALCONY DECK UPRIGHT AT "INSIDE CORNER"



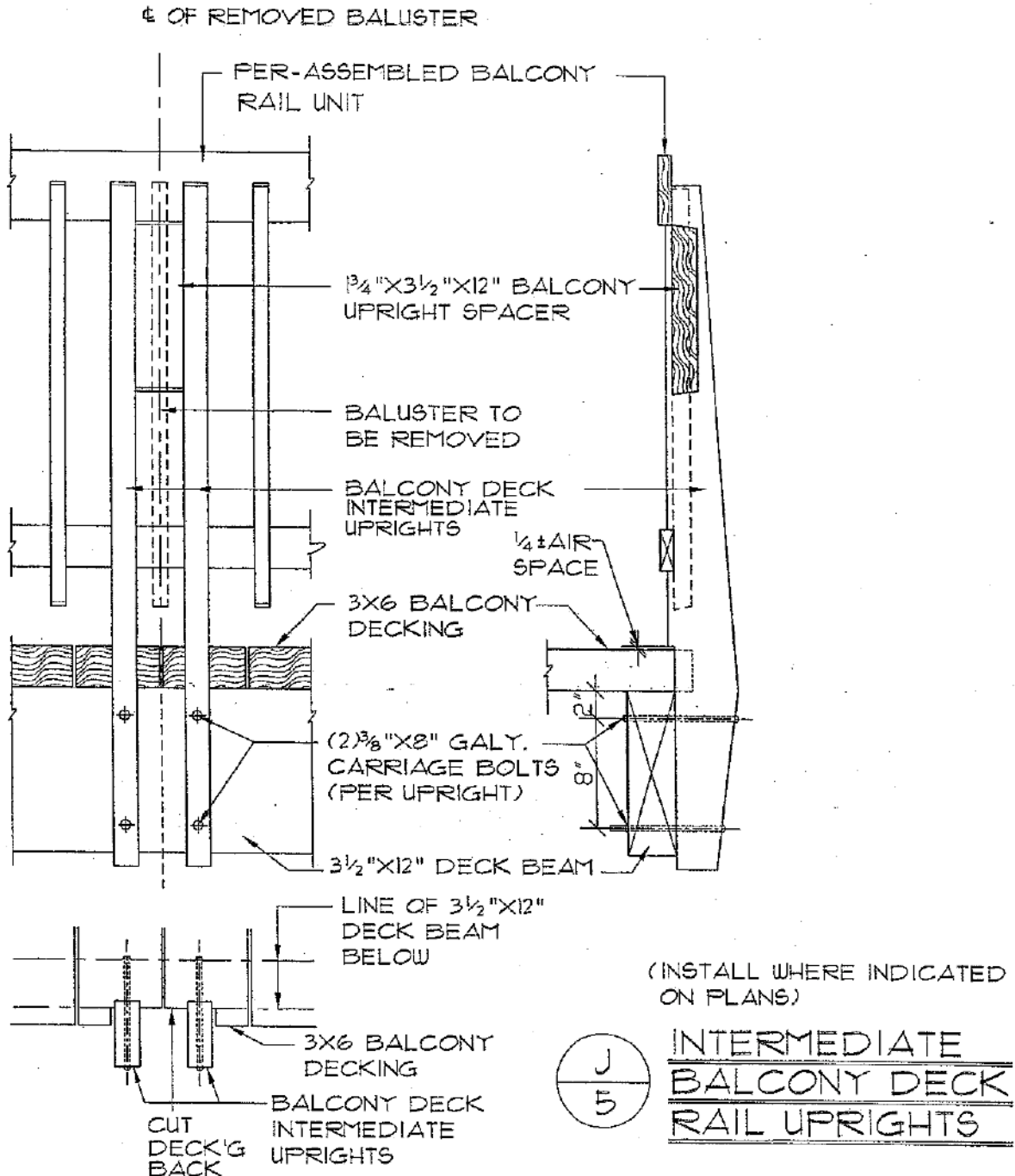
# Acorn Deck House Company

Keep in mind that some of the "old" details may not apply to your deck.

AcornDeckHouse.com

852 Main Street Acton, MA 01720

800.727.3325 Fax: 978.263.6850



**NOTE:**

1. CENTER THE PAIR OF UPRIGHTS ON THE CENTERLINE OF LOCATING BALUSTER AT APPROX. THE LOCATION SHOWN ON PLANS (UNLESS SPECIFICALLY DIMENSIONED). BALCONY RAILING SHOULD SPAN NO MORE THAN 9'-0" BETWEEN UPRIGHTS.
2. NOTCH THE BALCONY DECKING TO RECEIVE UPRIGHTS AS SHOWN IN PLAN VIEW.
3. REMOVE LOCATING BALUSTER FILL SCREW HOLES WITH 3/8" DIA. MAHOGANY PLUGS.
4. USING PREDRILLED UPRIGHTS AS TEMPLATES, LOCATE AND DRILL 3/8" X 8" DIAMETER PILOT HOLES THROUGH BEAM.
5. MOUNT UPRIGHTS WITH (2) 3/8" X 8" CARRIAGE BOLTS EACH, AS SHOWN.  
ATTACH SPACER BLOCK BETWEEN UPRIGHTS WITH (4) 2 1/2" X 12" STAINLESS SCREWS. ATTACH RAILS TO UPRIGHTS WITH (2) 2 1/2" X 12" STAINLESS SCREW PER CONNECTION FROM "INSIDE" OF RAIL.
6. STANDARD RAIL ATTACHMENT REFER TO (J/2) (J/3).

# Acorn Deck House Company

Keep in mind that some of the "old" details may not apply to your deck.

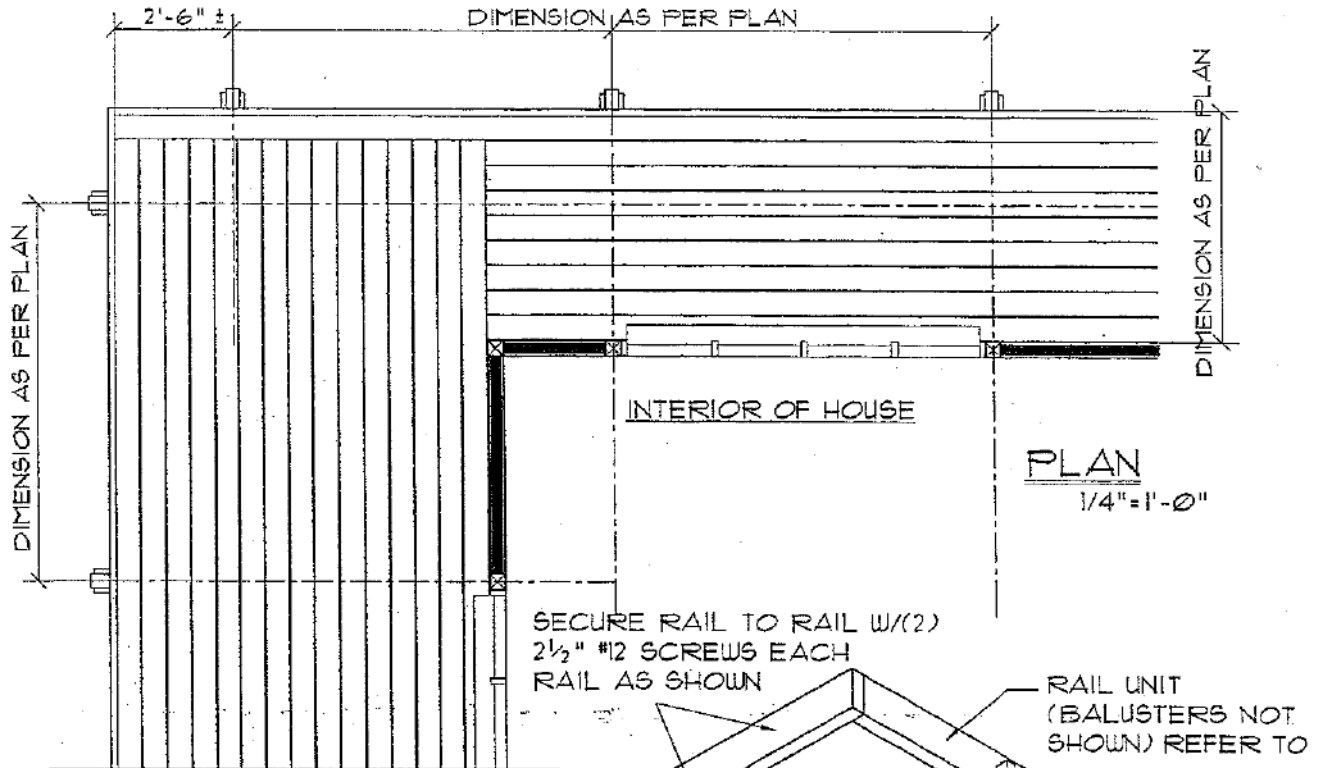
AcornDeckHouse.com

852 Main Street Acton, MA 01720

800.727.3325 Fax: 978.263.6850

ISOMETRIC BELOW SHOWN FROM THIS ANGLE.

RAIL SUPPORT @ BALCONY CORNER



INSTALL (1) 80d NAIL  
@ EACH PLANK AS PER  
WITH NO SPACERS

80d NAILS AS PER  
WITH SPACERS

SURFACE MOUNT  
BALCONY BEAM  
HANGER (5001)  
(FOR ATTACHMENT  
REFER TO

4X4 BALCONY  
POST

BALCONY BEAM  
HANGER (5035)  
FOR ATTACHMENT  
REFER TO

ISOMETRIC  
NO SCALE

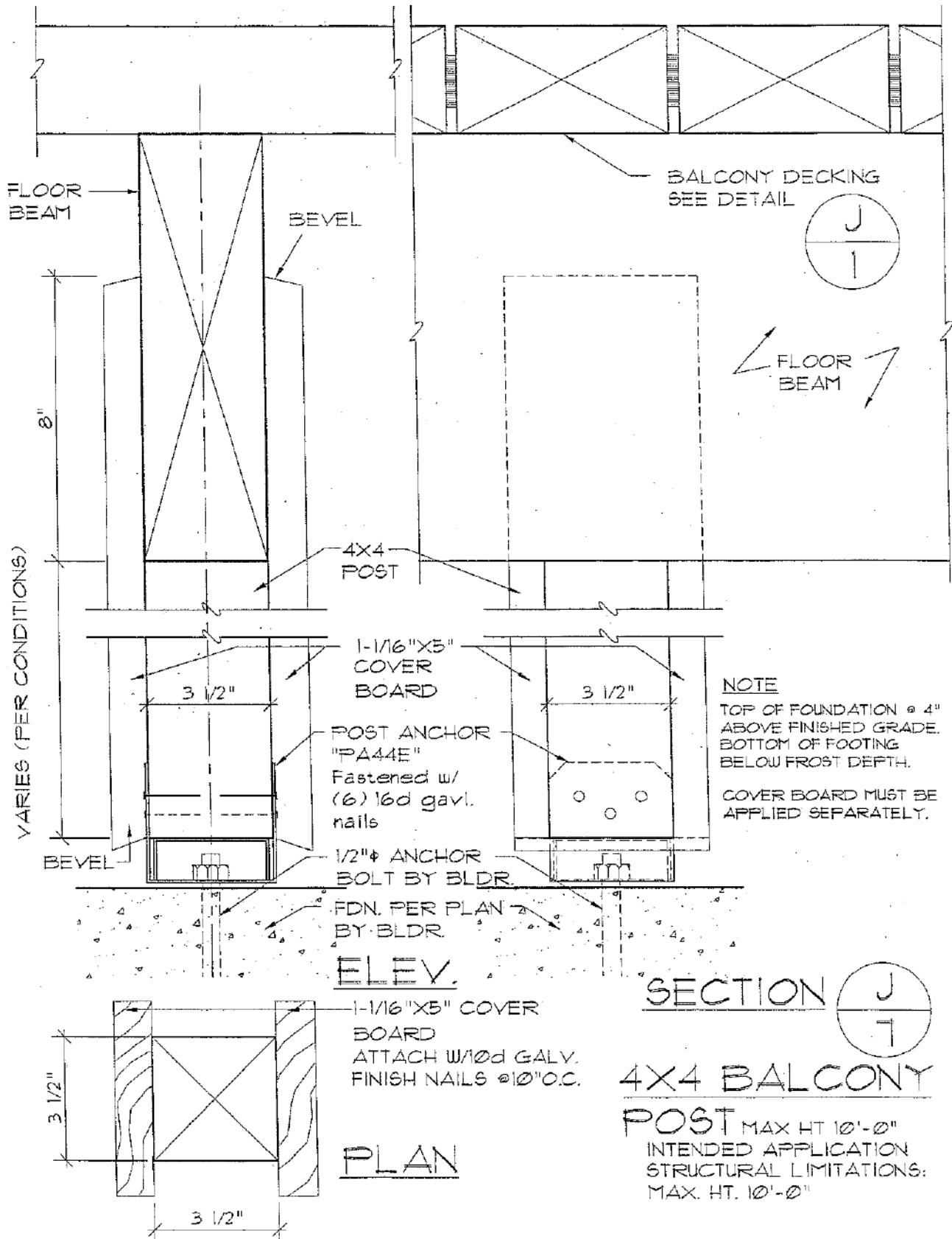
# Acorn Deck House Company

Keep in mind that some of the "old" details may not apply to your deck.

AcornDeckHouse.com

852 Main Street Acton, MA 01720

800.727.3325 Fax: 978.263.6850





# Acorn Deck House Company

Keep in mind that some of the "old" details may not apply to your deck.

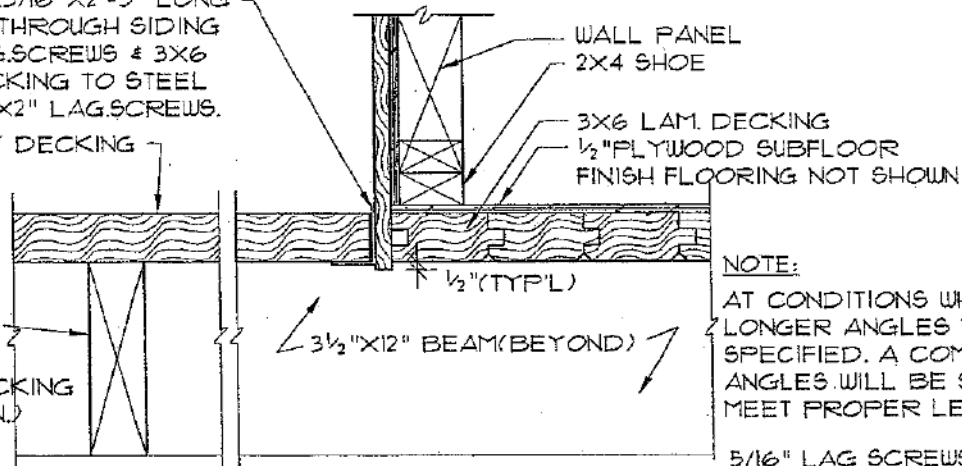
AcornDeckHouse.com

852 Main Street Acton, MA 01720

800.727.3325 Fax: 978.263.6850

FASTEN 3"x3"x3/16"x2'-5" LONG  
STEEL ANGLE THROUGH SIDING  
W/5/16"x4" LAG SCREWS & 3X6  
BALCONY DECKING TO STEEL  
ANGLE W/5/16"x2" LAG SCREWS.  
3X6 BALCONY DECKING

3 1/2"x12" BEAM  
SUPPORTING  
BALCONY DECKING  
(AS PER PLAN)



#### NOTE:

AT CONDITIONS WHICH REQUIRE  
LONGER ANGLES THAN THOSE  
SPECIFIED, A COMBINATION OF  
ANGLES WILL BE SUPPLIED TO  
MEET PROPER LENGTH.

5/16" LAG SCREWS  
REQUIRE 3/16"  $\phi$  PILOT  
HOLES (TO BE DRILLED  
ON SITE BY BUILDER)

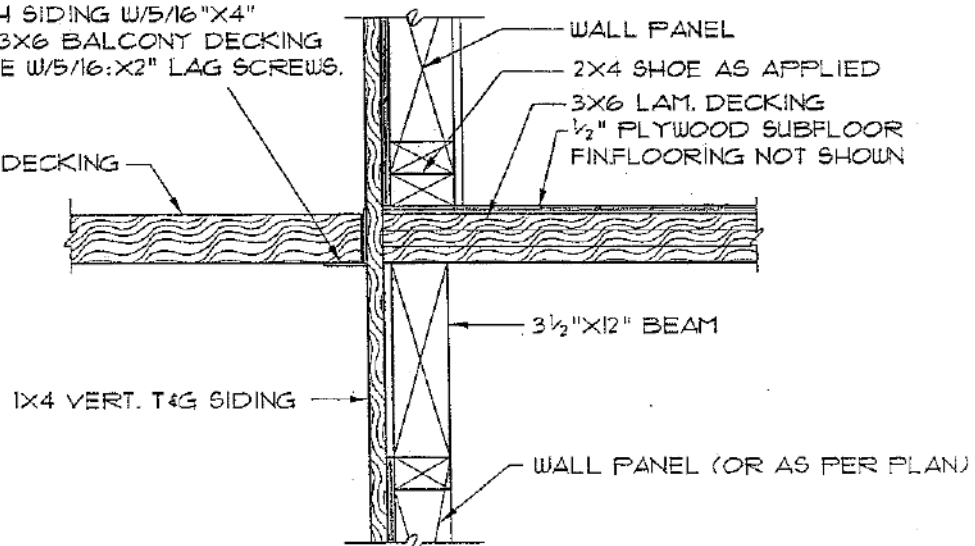


## BALCONY DECK SUPPORT AT EXTERIOR WALL

(EVEN END SHOWN-GABLE END SIMILAR)

FASTEN 3"x3"x3/16"x4'-0" STEEL  
ANGLE THROUGH SIDING W/5/16"x4"  
LAG SCREWS & 3X6 BALCONY DECKING  
TO STEEL ANGLE W/5/16"x2" LAG SCREWS.

3X6 BALCONY DECKING



## BALCONY DECK SUPPORT ADJACENT EXTENDED LIVING ROOM

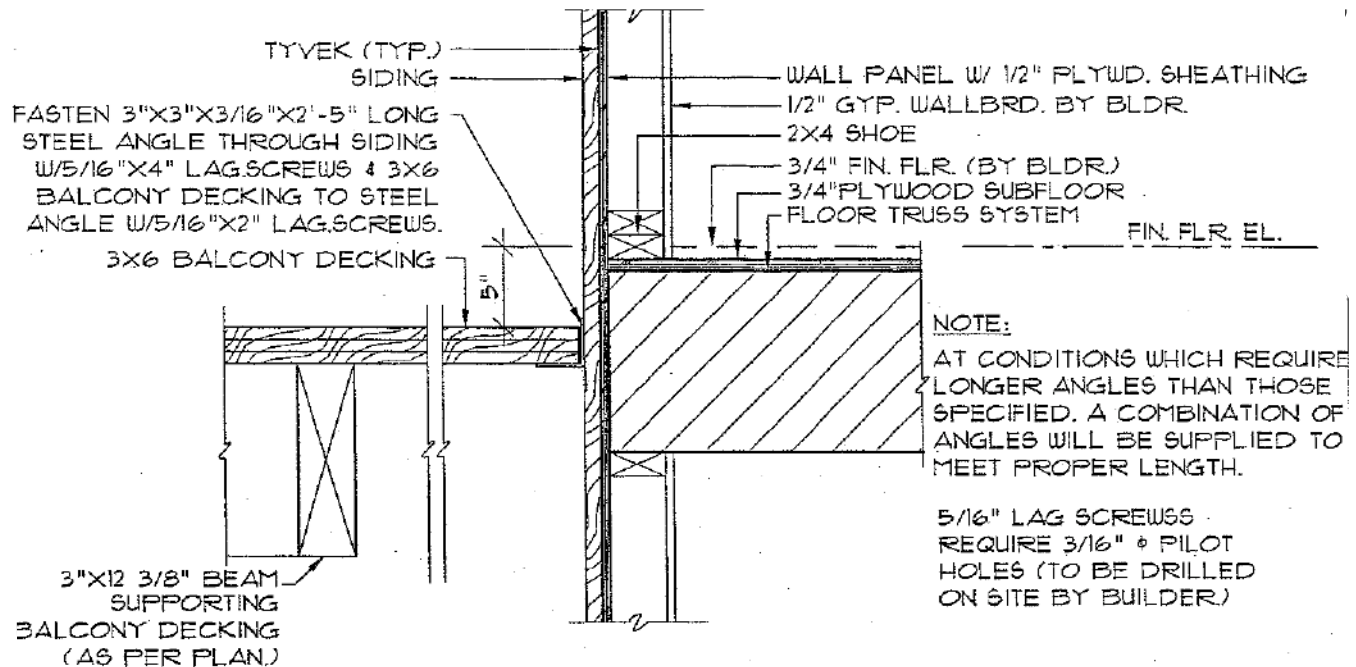
# Acorn Deck House Company

Keep in mind that some of the "old" details may not apply to your deck.

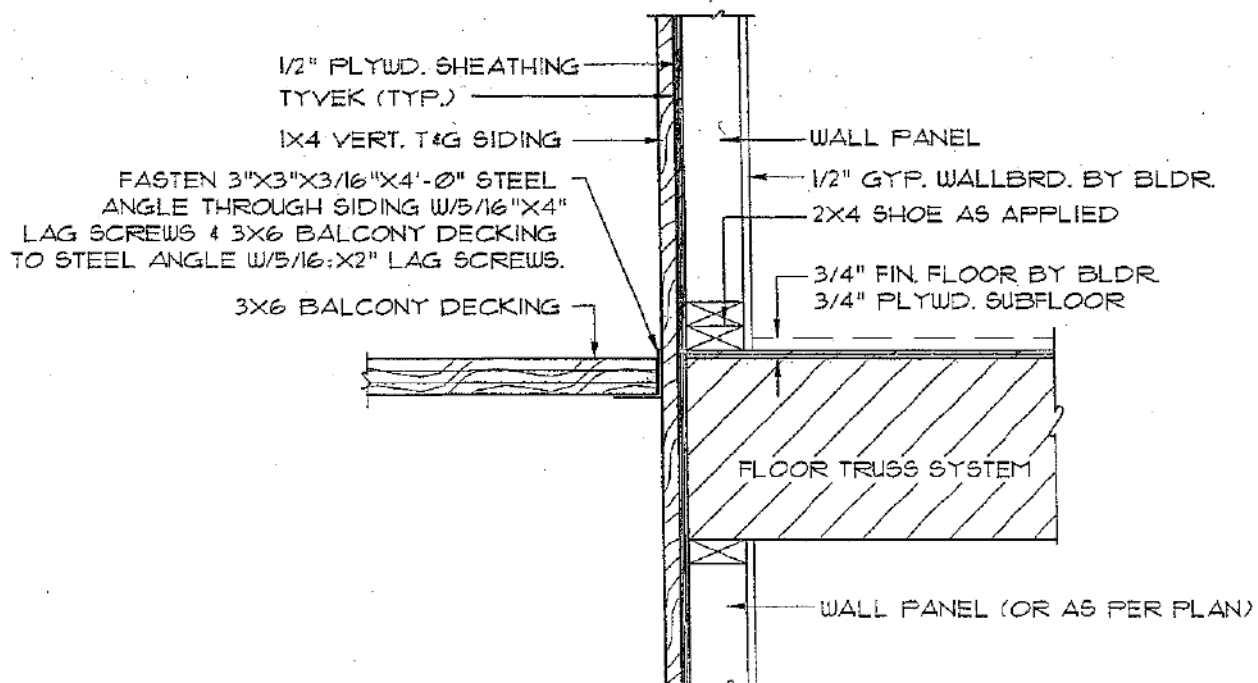
AcornDeckHouse.com

852 Main Street Acton, MA 01720

800.727.3325 Fax: 978.263.6850



## J 9a BALCONY DECK SUPPORT AT EXTERIOR WALL (EVEN END SHOWN-GABLE END SIMILAR)



## J 10a BALCONY DECK SUPPORT ADJACENT EXTENDED LIVING ROOM

# Acorn Deck House Company

Keep in mind that some of the "old" details may not apply to your deck.

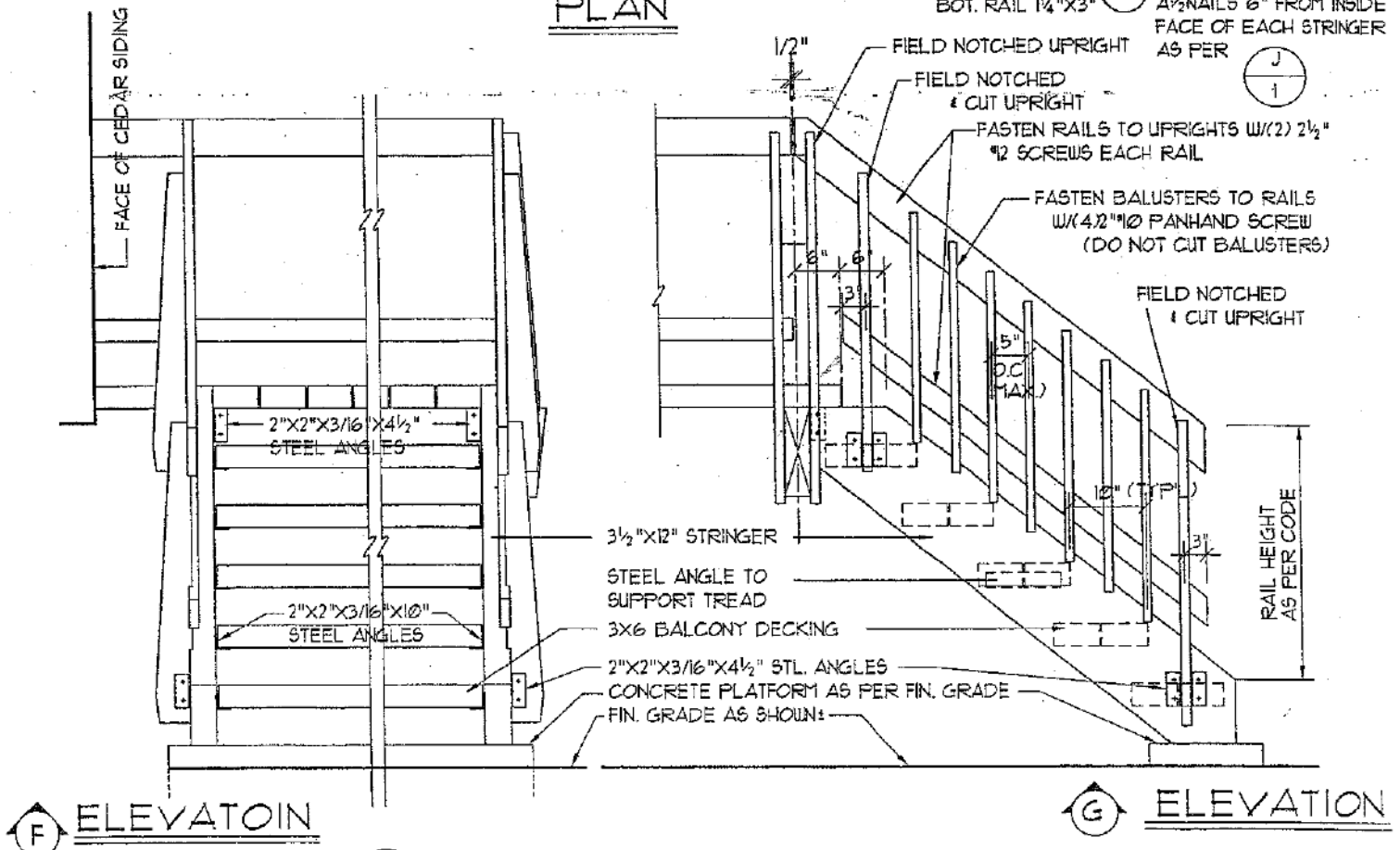
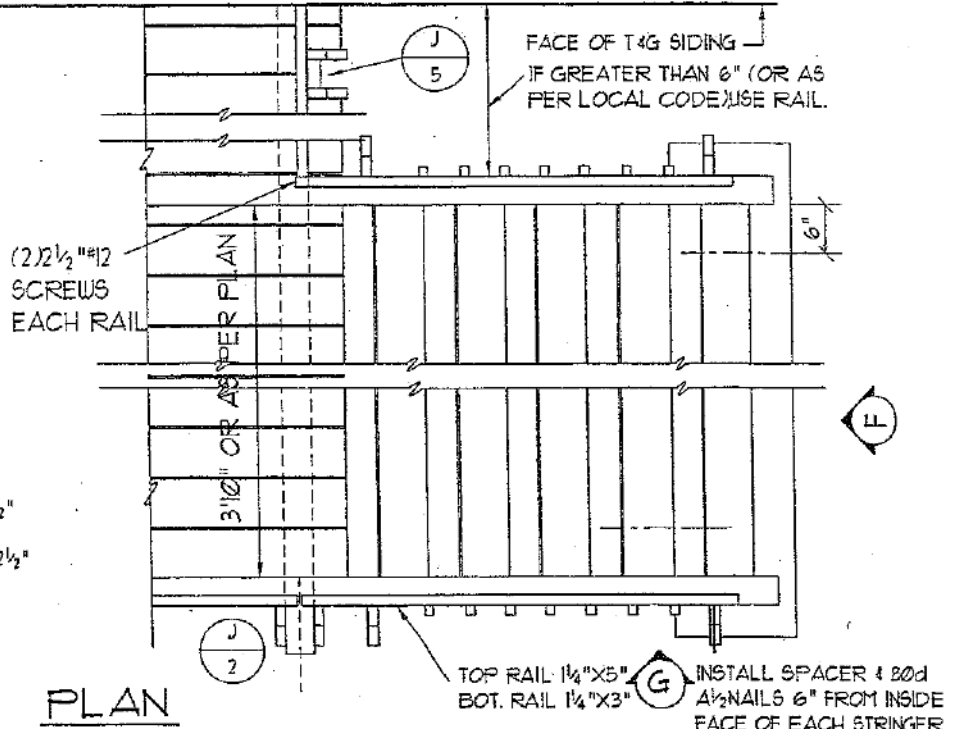
AcornDeckHouse.com

852 Main Street Acton, MA 01720

800.727.3325 Fax: 978.263.6850

## NOTES:

- RISER HEIGHT TO BE DETERMINED BY BUILDER AS PER FINISH GRADE.
- CONSTRUCTION OF BALCONY STAIRS OF DIFFERENT NUMBERS OF RISERS SIMILAR.
- ALL MATERIALS SHIPPED LOOSE & TO BE CUT TO FIT ON SITE.
- **STRINGERS:** 3½"x12" STRINGER ATTACHED TO 3½"x12" BALCONY DECK BEAM W/2"x2"x3/16"x10" STEEL ANGLE & ¼"x2" LAG SCREWS.
- **TREADS:** ATTACH 2"x2"x3/16"x10" STEEL ANGLE TO STRINGER W/(3/2)"x4 WOOD SCREWS. ATTACH 3x6 BALCONY DECKING TO STEEL ANGLE W/(4)¼"x2" LAG SCREWS.
- **UPRIGHTS:** NOTCH & CUT AS REQ'D. ATTACH UPRIGHTS TO STRINGER W/(2) 2"x2"x3/16"x4½" STEEL ANGLES & (4)¼"x2" LAG SCREWS. ATTACH UPRIGHT TO STEEL ANGLE W/(2)¼"x2½" MACHINE BOLTS. CUT UPRIGHTS @ BOTTOM ONLY.



J BALCONY STAIRS TO GRADE

# Acorn Deck House Company

Keep in mind that some of the "old" details may not apply to your deck.

AcornDeckHouse.com

852 Main Street Acton, MA 01720

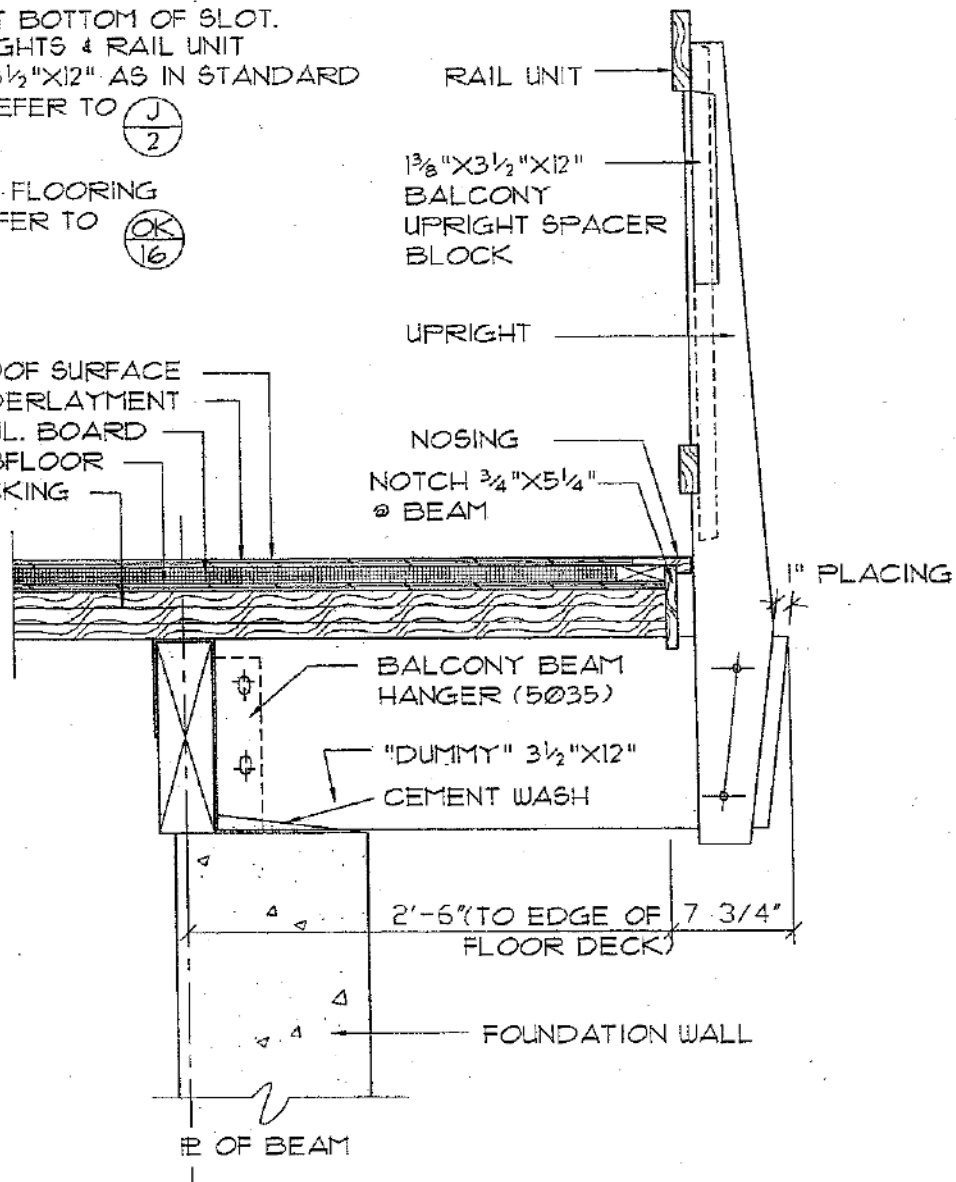
800.727.3325 Fax: 978.263.6850

## NOTES:

- ATTACH "DUMMY"  $3\frac{1}{2}" \times 12"$  TO  $3\frac{1}{2}" \times 12"$  FLOOR BEAM WITH BALCONY BEAM HANGER (5035) AND (2)  $\frac{1}{2}" \times 4\frac{1}{2}"$  MACHINE BOLTS INSTALLED AT TOP OF SLOTS. ATTCH HANGER TO FLOOR BEAM WITH (2)  $\frac{1}{2}" \times 6"$  LAG BOLTS THOUGH  $3\frac{1}{2}" \times 12"$  FLOOR BEAM AND INTO "DUMMY" INSTALLED AT BOTTOM OF SLOT.
- ATTACH UPRIGHTS & RAIL UNIT TO "DUMMY"  $3\frac{1}{2}" \times 12"$  AS IN STANDARD CONDITION, REFER TO  $\frac{J}{2}$

- FOR SUNDECK FLOORING DETAILS, REFER TO  $\frac{OK}{16}$

WEATHER-PROOF SURFACE  
PLYWOOD UNDERLAYMENT  
TAPERED INSUL. BOARD  
PLYWOOD SUBFLOOR  
3X6 LAM. DECKING



$\frac{OJ}{12a}$

BALCONY DECK @ SUNDECK

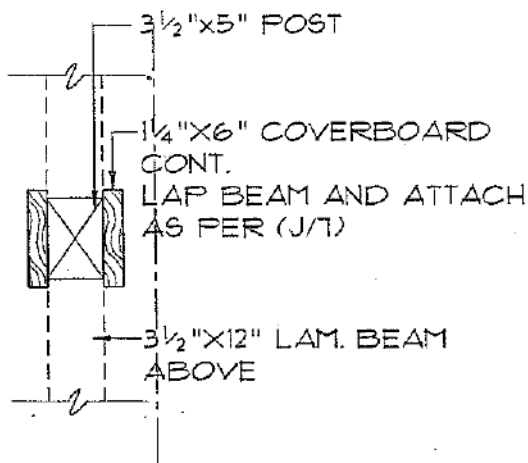
# Acorn Deck House Company

Keep in mind that some of the "old" details may not apply to your deck.

AcornDeckHouse.com

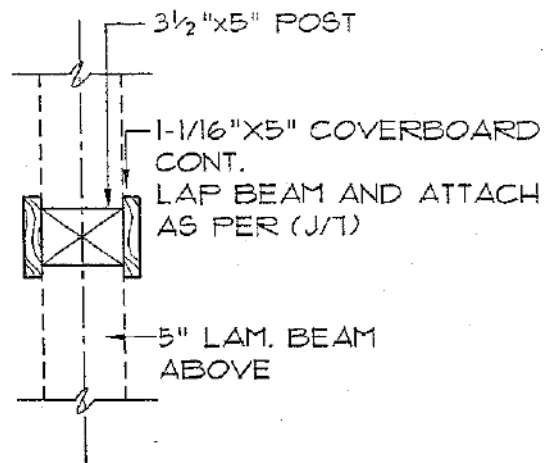
852 Main Street Acton, MA 01720

800.727.3325 Fax: 978.263.6850



J 13 3 1/2"X5" BALCONY  
POST (AT 3 1/2" LAM BEAM)

INTENEN APPLICATION/  
STRUCTURAL LIMITATIONS:  
MAX. HT.: 10'-0" TO 13'-0"



J 14 3 1/2"X5" BALCONY  
POST (AT 5" LAM BEAM)

INTENEN APPLICATION/  
STRUCTURAL LIMITATIONS:  
MAX. HT.: 13'-0"